

## LVP 1 (Baltic Lift) – Self-Propelled Crane Barge





## LVP 1 (Baltic Lift) – Self-Propelled Crane Barge

### Technical Data

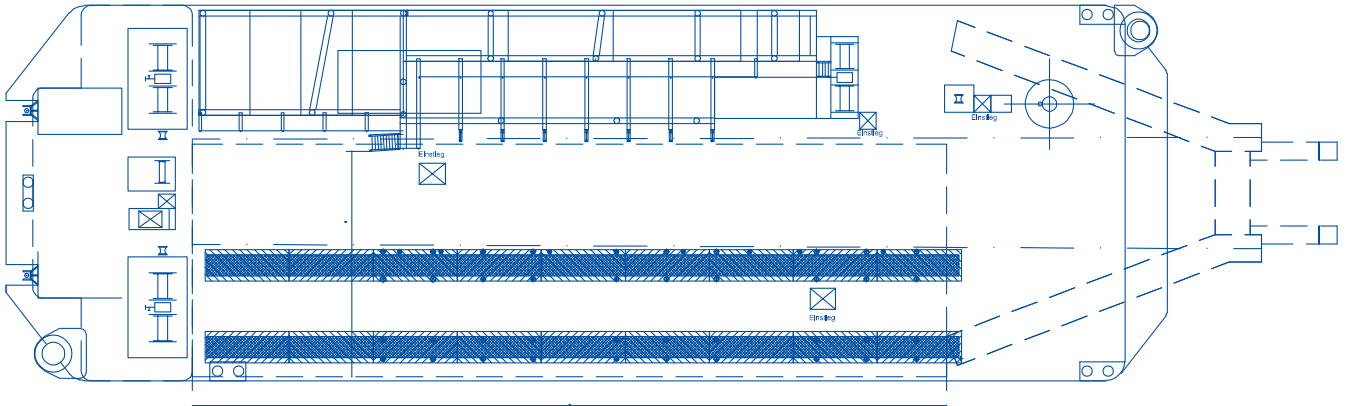
<b>Basic Data</b>	Vessel Type	Self-Propelled Crane Barge
	Year of Built	1974
	Yard	Mützelfeldtwerft Cuxhaven
	Port of Registry	Rostock
	Flag	German
	Call Sign	DFQC
	IMO-No.	8872796
	Class	DNV-GL (100A5K MC, near coast 50 nm)
<b>Main Dimensions</b>	Length o.a.	53,78 m
	Breadth	17,85 m
	Depth	4,55 m
	Draft	min 1,90 m, max 2,40 m
	Gross Tonnage	1.086
<b>Main crane</b>	Lift Capacity A-Frame	max. 200 t
	Outreach	max. 18 m
	Top Unit	Optional, max. 140 t
	Outreach Top Unit	max. 28 m
<b>Auxiliary crane Model</b>	Liebherr	HS 843
	Boom length	max. 32 m
	Lift Capacity	e.g. 23 t at 6,5 m with 32 m boom
<b>Machinery &amp; Propulsion</b>	Main Engine	2 x Deutz SBF 12 M 716
	Power	2 x 321 kW
	Propulsion	2 x 360° Schottel Rudderpropeller
	Bow thruster	1 x Cone Jet Schottel SKJ 142, 325 kW
	Gensets	2 x 580 kVA, 1x 75 kVA 380/220 V
<b>Performance</b>	Service Speed	4 kn
	Max. Speed	6 kn
	Average Consumption	Service: 250 l/h
<b>Tank Capacities</b>	Fuel Oil	24 m <sup>3</sup>
	Fresh Water	15 m <sup>3</sup>
	Ballast Water Pumps	530 kW, 40 bar
<b>Deck Capacity</b>	Area	565 m <sup>2</sup>
	Cargo capacity	350 t
	Deck strength	up to 10 t/m <sup>2</sup>
<b>Accommodation</b>	Cabins	14 (10 x 1 + 1 x 4)
	Office	yes
<b>Equipment</b>	Communication	GMDSS A1, UHF Radio, GSM - Voice and Data, Internet
	Nautical	AIS, Radar, ECS, RTK DGNSS, Autopilot, Echo Sounder
	Sewage plant	yes
	Winches	1 x 10 t, 1 x 5 t
	Compressor	25 m <sup>3</sup> /min, 7 bar
	Work Boats	steel boat (7 m), Offshore RIB (6m, 100 hs)
	Dredging equipment	optional
	Offshore dive spread	optional
ROV Services	optional	
<b>Anchorage System</b>	Spud-Legs	2 x 26 m, extendable
	4-point-mooring	optional



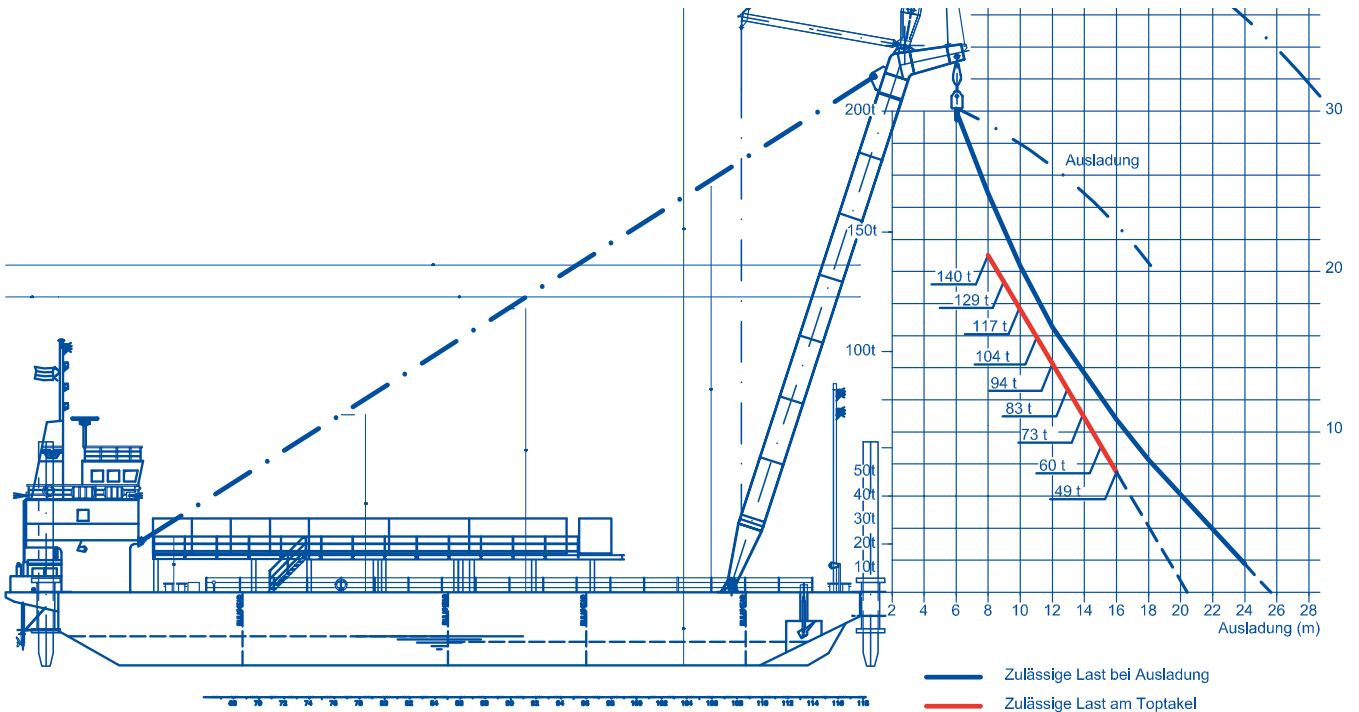
# LVP 1 (Baltic Lift) – Self-Propelled Crane Barge

## Technical drawings

Top view / main deck



Side view / M 1:200



## LVP 1 (Baltic Lift) – Self-Propelled Crane Barge

